

essentials

sinks & taps



Affordable quality in the kitchen

essentials sinks and taps...

For all your sink and tap requirements in the kitchen, essentials has the ideal product for you. The best thing about the essentials range is that it's all available at an affordable price, meaning you don't need to compromise quality.

The essentials sink range includes stainless steel, granite and ceramic sinks. The tap range includes a pull-out tap, 3 in 1 hot taps including an electronic touch hot tap plus a selection of designer, classic and traditional taps.

03	stainless steel sinks
08	stainless steel undermount sinks
14	stainless steel round sinks
15	ceramic sinks
16	granite sinks
18	granite undermount sinks
19	sink accessories
20	coloured waste kits
21	coloured taps
22	3 in 1 hot taps & pull-out tap
23	taps
26	sink dimensions
37	tap dimensions



stainless steel sinks



carry a **lifetime warranty**

granite sinks



carry a **20 year warranty**

ceramic sinks



carry a **20 year warranty**

taps



carry a **5 year warranty**

3 in 1 hot taps

carry a **2 year warranty**

and the tank carry a **1 year warranty**

EQUAD861

Quadro Single Bowl Sink

- Reversible
- Overall size: 860mm x 500mm x 190mm
- Minimum base unit: 500mm
- Hand fabricated
- Waste and overflow included
- Suitable for a waste disposal unit



EQUAD451

Quadro Single Bowl Sink

- Overall size: 450mm x 500mm x 200mm
- Minimum base unit: 600mm
- Hand fabricated
- Waste and overflow included
- Suitable for a waste disposal unit



EQUAD101

Quadro Single Bowl Sink

- Reversible
- Overall size: 1000mm x 500mm x 190mm
- Minimum base unit: 600mm
- Hand fabricated
- Waste and overflow included
- Suitable for a waste disposal unit



EQUAD601

Quadro Single Bowl Sink

- Overall size: 600mm x 500mm x 200mm
- Minimum base unit: 600mm
- Waste and overflow included
- Hand fabricated
- Suitable for a waste disposal unit



EQUAD102

Quadro 1.5 Bowl Sink

- Reversible
- Overall size: 1000mm x 500mm x 190mm
- Minimum base unit: 600mm
- Hand fabricated
- Waste and overflow included
- Suitable for a waste disposal unit



ESSBELSS

Belfast Sink

- Overall size: 595mm x 455mm x 270mm
- Cabinet width: 600
- 90mm waste and overflow included
- Suitable for a waste disposal unit



EMIN1001

Minimalist Single Bowl Sink 25° Radius Corners

- Left or right hand drainer
- Overall size: 1000mm x 520mm x 216mm
- Deep bowl design
- Flush fit design
- Minimum base unit: 600mm
- Waste and overflow included



Also available EMIN8001

Minimalist Compact Single Bowl Sink
25° Radius Corners

- Overall size: 800mm x 520mm x 206mm
- Minimum base unit: 450mm



EMIN1002

Minimalist 1.5 Bowl Sink 25° Radius Corners

- Left or right hand drainer
- Overall size: 1000mm x 520mm x 206mm
- Deep bowl design (main bowl)
- Flush fit design
- Minimum base unit: 600mm
- Waste and overflow included



ESSDES10001

Designer Single Bowl Sink 25° Radius Corners

- Left or right hand drainer
- Overall size: 1000mm x 500mm x 212mm
- Deep bowl design
- Minimum base unit: 600mm
- Waste and overflow included
- Suitable for a waste disposal unit



Also available ESSDES8001
Designer Compact Single Bowl Sink
25° Radius Corners

- Overall size: 800mm x 500mm x 203mm
- Minimum base unit: 500mm

ESSDES10002

Designer 1.5 Bowl Sink 25° Radius Corners

- Left or right hand drainer
- Overall size: 1000mm x 500mm x 202mm
- Deep bowl design (main bowl)
- Minimum base unit: 600mm
- Waste and overflow included
- Suitable for a waste disposal unit



ESS201

Single Bowl Sink

- Reversible
- Overall size: 950mm x 508mm x 150mm
- Minimum base unit: 600mm
- Waste and overflow included
- Suitable for a waste disposal unit



ESS202

1.5 Bowl Sink

- Reversible
- Overall size: 950mm x 508mm x 150mm
- Minimum base unit: 600mm
- Waste and overflow included
- Suitable for a waste disposal unit



ESS101

Single Bowl Sink

- Reversible
- Overall size: 1000mm x 500mm x 185mm
- Minimum base unit: 600mm
- Waste and overflow included
- Suitable for a waste disposal unit



ESS102

1.5 Bowl Sink

- Reversible
- Overall size: 1000mm x 500mm x 185mm
- Minimum base unit: 600mm
- Waste and overflow included
- Suitable for a waste disposal unit



ESSDB801

Compact Single Deep Bowl Sink

- Reversible
- Overall size: 800mm x 500mm x 200mm
- Deep bowl design
- Minimum base unit: 500mm
- Waste and overflow included
- Suitable for a waste disposal unit



ESSDB101

Single Deep Bowl Sink

- Reversible
- Overall size: 1000mm x 500mm x 200mm
- Deep bowl design
- Minimum base unit: 600mm
- Waste and overflow included
- Suitable for a waste disposal unit



ESSDB102

1.5 Deep Bowl Sink

- Reversible
- Overall size: 1000mm x 500mm x 200mm
- Deep bowl design (main bowl)
- Minimum base unit: 600mm
- Waste and overflow included
- Suitable for a waste disposal unit



ESSDBD

Deep Twin Bowl Sink

- Reversible
- Overall size: 1160mm x 500mm x 202mm
- Deep bowl design (both bowls)
- Minimum base unit: 800mm
- Waste and overflow included
- Suitable for a waste disposal unit



ESS9651-75PACK

Single Bowl Sink & Tap Pack 9651

- Reversible
- Overall size: 965mm x 500mm x 160mm
- Minimum base unit: 600mm
- Waste and overflow included
- Suitable for a waste disposal unit

Includes
ESSCLAS75
Chrome Tap



ESS100PACK

Compact Single Sink & Tap Pack

- Reversible
- Overall size: 860mm x 500mm x 170mm
- Minimum base unit: 500mm
- Waste and overflow included
- Suitable for a waste disposal unit

Includes
ESSCLAS75
Chrome Tap



ESS9652-75PACK

1.5 Bowl Sink & Tap Pack 9652

- Reversible
- Overall size: 965mm x 500mm x 160mm
- Minimum base unit 600mm
- Waste and overflow included
- Suitable for a waste disposal unit

Includes
ESSCLAS75
Chrome Tap



ESS100LPACK

Single Bowl Sink & Tap Pack

- Reversible
- Overall size: 965mm x 500mm x 170mm
- Minimum base unit: 600mm
- Waste and overflow included
- Suitable for a waste disposal unit

Includes
ESSCLAS75
Chrome Tap



ESS5801

Compact Single Bowl Sink

- Reversible
- Overall size: 580mm x 488mm x 180mm
- Minimum base unit: 450mm
- Waste and overflow included
- Suitable for a waste disposal unit



ESS150PACK

1.5 Bowl Sink & Tap Pack

- Reversible
- Overall size: 965mm x 500mm x 155mm
- Minimum base unit: 600mm
- Waste and overflow included
- Suitable for a waste disposal unit

Includes
ESSCLAS75
Chrome Tap



E25UM1601

Undermount Half Bowl Sink
25° Radius Corners

- Internal size: 160mm x 300mm x 120mm deep
- Powder coated underside
- Waste included



E25UM1801

Undermount Half Bowl Full Length Sink
25° Radius Corners

- Internal size: 180mm x 396mm x 120mm deep
- Powder coated underside
- Waste included



E25UM3401

Undermount Single Bowl Sink
25° Radius Corners

- Internal size: 340mm x 400mm x 190mm deep
- Minimum base unit: 400mm
- Powder coated underside
- Waste and overflow included
- Suitable for a waste disposal unit



E25UM4801

Undermount Large Single Bowl Sink
25° Radius Corners

- Internal size: 480mm x 400mm x 200mm deep
- Minimum base unit: 600mm
- Powder coated underside
- Waste and overflow included
- Suitable for a waste disposal unit



E25UM6501

Undermount Extra Large Single Bowl Sink
25° Radius Corners

- Internal size: 650mm x 400mm x 200mm deep
- Minimum base unit: 700mm
- Powder coated underside
- Waste and overflow included
- Suitable for a waste disposal unit





E25UM2REV

Undermount 1.5 Bowl Sink 25° Radius Corners

- Reversible
- 340mm x 400mm x 190mm main bowl
- 160mm x 300mm x 120mm half bowl
- Minimum base unit 600mm
- Powder coated underside
- Waste and overflow included
- Suitable for a waste disposal unit



E25UM2L/R

Undermount 1.5 Bowl Sink 25° Radius Corners

- Left or right large bowl
- 340mm x 400mm x 190mm main bowl
- 160mm x 300mm x 120mm half bowl
- Minimum base unit 600mm
- Powder coated underside
- Waste and overflow included
- Suitable for a waste disposal unit



E25UM5502L/R

Undermount 1.5 Bowl Sink 25° Radius Corners

- Left or right large bowl
- 340mm x 400mm x 180mm main bowl
- 180mm x 400mm x 120mm half bowl
- Minimum base unit: 600mm
- Powder coated underside
- Waste and overflow included
- Suitable for a waste disposal unit



E25UM6902L

Undermount 1.5 Bowl Sink 25° Radius Corners

- Left hand large bowl
- 480mm x 400mm x 195mm main bowl
- 180mm x 400mm x 120mm half bowl
- Minimum base unit 800mm
- Powder coated underside
- Waste and overflow included
- Suitable for a waste disposal unit



E10UM1801

Undermount Half Bowl Sink 10° Radius Corners

- Internal size: 180mm x 400mm x 125mm deep
- Powder coated underside
- Waste included
- Sink can be used as undermount, inset or flush fit



E10UM3401

Undermount Single Bowl Sink 10° Radius Corners

- Internal size: 340mm x 400mm x 190mm deep
- Minimum base unit: 400mm
- Powder coated underside
- Waste and overflow included
- Suitable for a waste disposal unit
- Sink can be used as undermount, inset or flush fit



E10UM4101

Undermount Single Bowl Sink 10° Radius Corners

- Internal size: 410mm x 400mm x 190mm deep
- Minimum base unit: 450mm
- Powder coated underside
- Waste and overflow included
- Suitable for a waste disposal unit
- Sink can be used as undermount, inset or flush fit



E10UM5501

Undermount Single Bowl Sink 10° Radius Corners

- Internal size: 550mm x 400mm x 190mm deep
- Minimum base unit: 600mm
- Powder coated underside
- Waste and overflow included
- Suitable for a waste disposal unit
- Sink can be used as undermount, inset or flush fit



E10UM3434

Undermount Double Bowl Sink
10° Radius Corners

- 340mm x 400mm x 190mm bowls
- Minimum base unit: 800mm
- Powder coated underside
- Waste and overflow included
- Suitable for a waste disposal unit
- Sink can be used as undermount, inset or flush fit



E10UM3418L/R

Undermount 1.5 Bowl Sink
10° Radius Corners

- Left or right large bowl
- 340mm x 400mm x 190mm main bowl
- 180mm x 400mm x 125mm half bowl
- Minimum base unit: 600mm
- Waste and overflow included
- Suitable for a waste disposal unit
- Sink can be used as undermount, inset or flush fit



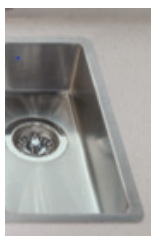
E10UM4118L/R

Undermount 1.5 Bowl Sink
10° Radius Corners

- Left or right large bowl
- 410mm x 400mm x 190mm main bowl
- 180mm x 400mm x 125mm half bowl
- Minimum base unit: 700mm
- Waste and overflow included
- Suitable for a waste disposal unit
- Sink can be used as undermount, inset or flush fit



Undermount
Fitting



Inset
Fitting



E10UM5518L/R

Undermount 1.5 Bowl Sink
10° Radius Corners

- Left or right large bowl
- 550mm x 400mm x 190mm main bowl
- 180mm x 400mm x 125mm half bowl
- Minimum base unit: 800mm
- Waste and overflow included
- Suitable for a waste disposal unit
- Sink can be used as undermount, inset or flush fit



ESSUM1601

Undermount Half Bowl Sink

- Internal size: 164mm x 300mm x 100mm deep
- Powder coated underside
- Waste included



ESSUM2L/RPACK

Undermount 1.5 Bowl Sink

- Left or right large bowl
- 350mm x 410mm x 185mm main bowl
- 164mm x 300mm x 110mm half bowl
- Minimum base unit 600mm
- Powder coated underside
- Waste and overflow included
- Suitable for a waste disposal unit

Includes ESSCLAS75

Chrome Tap



ESSUM3501PACK

Undermount Single Bowl Sink

- Internal size: 350mm x 410mm x 185mm deep
- Minimum base unit: 450mm
- Powder coated underside
- Waste and overflow included
- Suitable for a waste disposal unit

Includes ESSCLAS75

Chrome Tap



ESSUM2REVPACK

Undermount 1.5 Bowl Sink

- Reversible
- 350mm x 410mm x 185mm main bowl
- 164mm x 300mm x 110mm half bowl
- Minimum base unit 600mm
- Powder coated underside
- Waste and overflow included
- Suitable for a waste disposal unit

Includes ESSCLAS75

Chrome Tap



ESSUM4801PACK

Undermount Large Single Bowl Sink

- Internal size: 480mm x 400mm x 195mm deep
- Minimum base unit: 600mm
- Powder coated underside
- Waste and overflow included
- Suitable for a waste disposal unit

Includes ESSCLAS75

Chrome Tap



ESQUM1801

Undermount Half Bowl Sink Zero Radius Corners

- Internal size: 180mm x 400mm x 140mm deep
- Powder coated underside
- Waste included



ESQUM4001

Undermount Single Bowl Sink Zero Radius Corners

- Internal size: 400mm x 400mm x 200mm deep
- Minimum base unit: 500mm
- Powder coated underside
- Waste and overflow included
- Suitable for a waste disposal unit



ESQUM5001

Undermount Large Single Bowl Sink Zero Radius Corners

- Internal size: 500mm x 400mm x 200mm deep
- Minimum base unit: 600mm
- Powder coated underside
- Waste and overflow included
- Suitable for a waste disposal unit



ESQUM5502

Undermount 1.5 Bowl Sink Zero Radius Corners

- 340mm x 400mm x 200mm main bowl
- 180mm x 400mm x 140mm half bowl
- Minimum base unit: 600mm
- Powder coated underside
- Waste and overflow included
- Suitable for a waste disposal unit



ESQUM1502L/R

Undermount 1.5 Bowl Sink Zero Radius Corners

- Left or right large bowl
- 340mm x 400mm x 190mm main bowl
- 160mm x 330mm x 120mm half bowl
- Minimum base unit: 600mm
- Powder coated underside
- Waste and overflow included
- Suitable for a waste disposal unit



ESSRDUM430

Round Single Bowl Undermount Sink

- 440mm diameter x 185mm deep
- Minimum base unit: 450mm
- Powder coated underside
- Waste and overflow included
- Suitable for a waste disposal unit



ESSRD440

Round Single Bowl Inset Sink

- 510mm diameter x 180mm deep
- Minimum base unit: 450mm
- Waste and overflow included
- Suitable for a waste disposal unit



ESSRDRAINER

Round Single Bowl Inset Sink Drainer

- 440mm diameter x 50mm deep
- Minimum base unit: 450mm
- Waste included



Can fit over an appliance
with a 40mm or thicker worktop

ECERFARMBEL

Belfast Farmhouse Sink

- Overall size: 595mm x 455mm x 250mm (270mm including waste outlet)*
- Cabinet width: 600mm
- 90mm waste included
- Not suitable for a waste disposal unit
- White



* Dimensional tolerance of +/-2%

ECERBEL

Belfast Sink

- Overall size: 595mm x 475mm x 220mm*
- Cabinet width: 600mm
- 90mm waste and overflow included
- Suitable for a waste disposal unit
- White



* Dimensional tolerance of +/-2%

ECER100

Ceramic Single Bowl Sink

- Overall size: 1000mm x 500mm x 222mm*
- Bowl size: 453mm x 390mm x 200mm deep bowl*
- Cabinet width: 600mm
- Reversible
- 90mm waste and overflow included
- White



*Dimensional tolerance of +/-2%

ECER150

Ceramic 1.5 Bowl Sink

- Overall size: 1000mm x 500mm x 222mm*
- Bowl sizes: 321mm x 390mm x 200mm* deep bowl
174mm x 260mm x 150mm*
- Cabinet width: 600mm
- Reversible
- 2 x 90mm waste and overflow included
- White



*Dimensional tolerance of +/-2%

ECER800D

Ceramic Double Bowl Sink

- Overall size: 800mm x 500mm x 220mm*
- 365mm x 450mm x 220mm* deep bowls
- Cabinet width: 800mm
- Suitable for a waste disposal unit
- 2 x 90mm waste included



*Dimensional tolerance of +/-2%

EDG8601

Designer Granite Compact Single Bowl

- Overall size: 860 x 500 x 218mm
- Reversible with deep bowl design
- Minimum base unit required 450mm
- Waste and overflow included
- Suitable for a waste disposal unit
- Midnight Black (BK), Yellow (YE), Red (RD), Blue (BL), White (WH), Fossil (FO), Shadow Grey (GY), Umber Brown (UM)



EDG1001

Designer Granite Large Single Bowl

- Overall size: 1000 x 500 x 218mm
- Reversible with deep bowl design
- Minimum base unit required 600mm
- Waste and overflow included
- Suitable for a waste disposal unit
- Midnight Black (BK), Yellow (YE), Red (RD), Blue (BL), White (WH), Fossil (FO), Shadow Grey (GY), Umber Brown (UM)



EDG1002

Designer Granite 1.5 Single Bowl

- Overall size: 1000 x 500 x 218mm
- Reversible with deep bowl design
- Minimum base unit required 600mm
- Waste and overflow included
- Suitable for a waste disposal unit
- Midnight Black (BK), Yellow (YE), Red (RD), Blue (BL), White (WH), Fossil (FO), Shadow Grey (GY), Umber Brown (UM)



ELIN8601

Linear Compact Single Bowl Sink

- Overall size: 860mm x 500mm x 205mm
- Reversible with deep bowl design
- Minimum base unit: 450mm
- Waste and overflow included
- Suitable for a waste disposal unit
- Gunmetal Grey (GM), Graphite Grey (GR), White (WH), Black (BK), Coffee (CO) or Champagne (CH)



ELIN10001

Linear Large Single Bowl Sink

- Overall size: 1000mm x 500mm x 220mm
- Reversible with deep bowl design
- Minimum base unit: 600mm
- Waste and overflow included
- Suitable for a waste disposal unit
- Gunmetal Grey (GM), Graphite Grey (GR), White (WH), Black (BK), Coffee (CO) or Champagne (CH)



ELIN10002

Linear 1.5 Bowl Sink

- Overall size: 1000mm x 500mm x 205mm
- Reversible with deep bowl design
- Minimum base unit: 600mm
- Waste and overflow included
- Suitable for a waste disposal unit
- Gunmetal Grey (GM), Graphite Grey (GR), White (WH), Black (BK), Coffee (CO) or Champagne (CH)



ECUB340

Cube Granite Inset / Undermount Single Bowl Sink

- Overall size: 370mm x 460mm x 200mm
- Bowl size: 340mm x 400mm x 200mm
- Minimum base unit: 450mm
- Plumbing kit included
- Waste, overflow and sink clips included
- Gunmetal Grey (GM), Graphite Grey (GR)
White (WH), Black (BK), Stone (ST), Blue (BL) or Fossil (FO)



ECUB400

Cube Granite Inset / Undermount Single Bowl Sink

- Overall size: 430mm x 460mm x 200mm
- Bowl size: 400mm x 400mm x 200mm
- Minimum base unit: 500mm
- Plumbing kit included
- Waste, overflow and sink clips included
- Gunmetal Grey (GM), Graphite Grey (GR)
White (WH), Black (BK), Stone (ST), Blue (BL) or Fossil (FO)



ECUB500

Cube Granite Inset / Undermount Single Bowl Sink

- Overall size: 530mm x 460mm x 200mm
- Bowl size: 500mm x 400mm x 200mm
- Minimum base unit: 600mm
- Plumbing kit included
- Waste, overflow and sink clips included
- Gunmetal Grey (GM), Graphite Grey (GR)
White (WH), Black (BK), Stone (ST), Blue (BL) or Fossil (FO)



ECUB150

Cube Granite Inset / Undermount 1.5 Bowl Sink

- Overall size: 555mm x 460mm x 200mm
- Bowl sizes: 335mm x 400mm x 200mm
155mm x 400mm x 140mm
- Minimum base unit: 600mm
- Can also be used as an inset
- Plumbing kit included
- Waste, overflow and sink clips included
- Gunmetal Grey (GM), Graphite Grey (GR)
White (WH), Black (BK), Stone (ST), Blue (BL) or Fossil (FO)

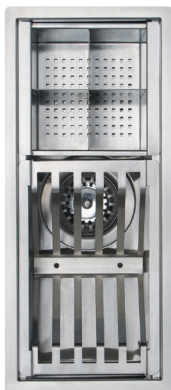


sink accessories

EDRAINER

Small Drainer

- 160 x 400 x 150mm
- Stainless Steel



EDRAINERL

Large Drainer

- 1000 x 200 x 150mm
- Stainless Steel



ESSFDM01

Universal Folding Mat

- 11.3h x 470w x 447.5d mm



ESSGCB01

Universal Glass Chopping Board

- Black
- 16.6h x 530w x 300d mm



ESSPK1SP

Space Saving Single Bowl Plumbing Kit

- 2 appliance inlets
- White



ESPK1

Single Bowl Plumbing Kit

- 2 appliance inlets
- White



ESSPK2SP

Space Saving Double Bowl Plumbing Kit

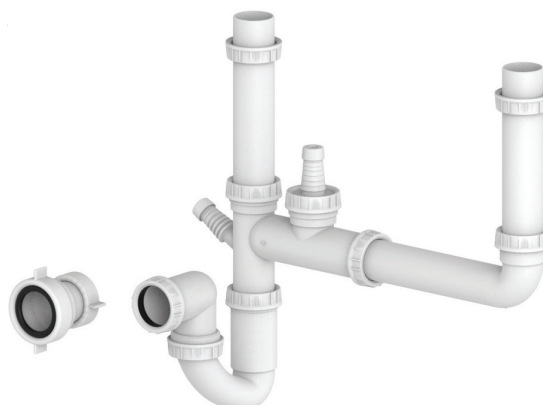
- 2 appliance inlets
- White



ESSPK2

Double Bowl Plumbing Kit

- 2 appliance inlets

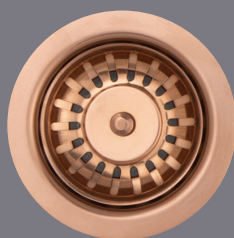


coloured waste kits

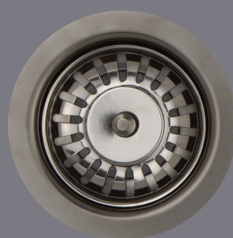
NOW AVAILABLE IN A CHOICE OF 4 COLOURS FOR CERAMIC AND GRANITE SINKS.



Brass



Copper



Gunmetal



Matt Black

WKC100BR/COP/GM/MBK

Inset Ceramic Single Bowl
Coloured Waste Kit

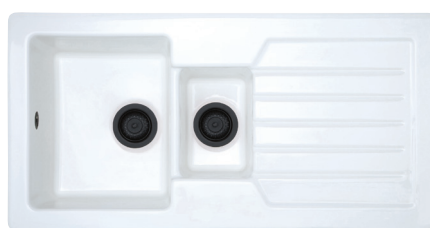
- Brass, Copper, Gunmetal or Matt Black



WKC150BR/COP/GM/MBK

Inset Ceramic 1.5 Bowl
Coloured Waste Kit

- Brass, Copper, Gunmetal Metal or Matt Black



WKCBELEBR/ COP/GM/MBK

Ceramic Belfast
Coloured Waste (overflow not inc.)

- Brass,
Copper,
Gunmetal
Metal
or Matt Black



WKCFBELEBR/ COP/GM/MBK

Ceramic Farmhouse Belfast
Coloured Waste (overflow not inc.)

- Brass,
Copper,
Gunmetal
Metal
or Matt Black



WKC100BR/ COP/GM/MBK

Ceramic Double Bowl
Coloured Waste Kit (2 required)

- Brass,
Copper,
Gunmetal
Metal or
Matt Black



WKG01BR/COP/GM/MBK

Granite Single Bowl Coloured Waste Kit

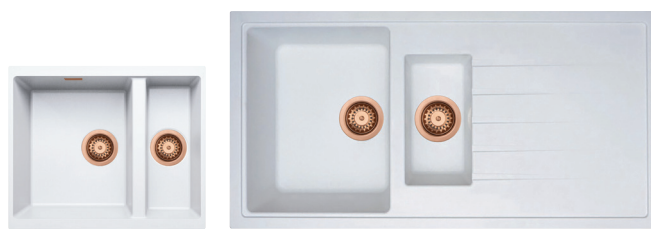
- Brass, Copper, Gunmetal Metal or Matt Black



WKG02BR/COP/GM/MBK

Granite 1.5 Bowl Coloured Waste Kit

- Brass, Copper, Gunmetal Metal or Matt Black



EPVD200- BR/COP/GM

PVD Coated
Dual Lever Tap

- Solid stainless steel
- Suitable for high or low pressure systems
- Fitted with flow aerator
- Available in 3 finishes



EPVD200-BR
Brass



EPVD200-COP
Copper



EPVD200-GM
Gunmetal

ESSCLAS200MB

Classic 200
Twin Lever Tap

- Suitable for high or low pressures systems
- Fitted with flow aerator
- Flexi-tails included
- Matt Black



EPVD300- BR/COP/GM

PVD Coated
Dual Lever Tap

- Solid stainless steel
- Suitable for high or low pressure systems
- Fitted with flow aerator
- Available in 3 finishes



EPVD300-COP
Copper



EPVD300-GM
Gunmetal



EPVD300-BR
Brass

ESSCLAS300MB

Classic 300
Twin Lever Tap

- Suitable for high or low pressures systems
- Fitted with flow aerator
- Flexi-tails included
- Matt Black



EPVD400- BR/COP/GM

PVD Coated
Single Lever Tap

- Solid stainless steel
- Suitable for high or low pressure systems
- Fitted with flow aerator
- Available in 3 finishes



EPVD400-GM
Gunmetal



EPVD400-BR
Brass



EPVD400-COP
Copper

ESSCLAS400MB

Classic 400
Single Lever Tap

- Suitable for high or low pressures systems
- Fitted with flow aerator
- Flexi-tails included
- Matt Black



3 in 1 hot taps & pull-out tap

E3N1ELECH/BS

3-1 Electronic Touch Hot Tap

- Digital touch kettle tap, simple, safe and sophisticated
- Constant visible LED indicator for ease of use and temperature control
- Contemporary swan neck tap
- Up to 98 degrees of filtered boiling water, along with domestic hot / domestic cold function (3 in 1)
- Stylish and discreet WRAS approved tank with digital temperature control, variable temp. setting 75° to 98°
- Low daily running costs, less than 3 pence per day, tested Jan 2019
- Minimum operating pressure just 1.0 bar
- Chrome or Brushed Steel



ESSFILTKIT

Filter Kit

- Upgrade the E3N1ELECH/BS with an additional filter kit to convert the tap into a 4-1 tap with bottle quality filtered cold water
- Filter kit also compatible with all essentials taps



ESSVULCANO & ESSLAVA

Vulcano & Lava 3 in 1 Hot Tap

- 98°C hot tap
- Filtered steaming hot water
- 2.5 litre tank
- Hot water supply pressure 0.5 bar
- Cold water supply pressure 1.7 - 8.6 bar
- 40mm base diameter
- 32mm tap cut out
- Chrome



ESSPOCH/BS BK/CM/GR/WH/GM

Pitone Pull-Out Tap

- 479mm high
- 230mm spout reach
- 660mm hose pull-out
- 50mm base diameter
- Chrome or Brushed Steel and also available with Black, Champagne, Grey, White or Gunmetal Grey hose



ESSCLAS200BK/GM/WH/GR ESSCLAS200BSBK/GM/WH/GR

Classic 200 Twin Lever Tap

- Suitable for high or low pressures systems
- Fitted with flow aerator
- Flexi-tails included
- Chrome or Brushed Steel with Black, Gunmetal Grey, White or Graphite Grey spout and handles



ESSCLAS300BK/GM/WH/GR ESSCLAS300BSBK/GM/WH/GR

Classic 300 Twin Lever Tap

- Suitable for high or low pressures systems
- Fitted with flow aerator
- Flexi-tails included
- Chrome or Brushed Steel with Black, Gunmetal Grey, White or Graphite Grey spout and handles



ESSCLAS100/BS

Classic 100 Tap

- Suitable for high or low pressures systems
- Fitted with flow aerator
- Flexi-tails included
- Chrome or Brushed Steel



ESSCLAS125/BS

Classic 125 Tap

- Suitable for high or low pressures systems
- Fitted with flow aerator
- Flexi-tails included
- Chrome or Brushed Steel



ESSCLAS150/BS

Classic 150 Tap

- Suitable for high or low pressures systems
- Fitted with flow aerator
- Flexi-tails included
- Chrome or Brushed Steel



ESSCLAS200/BS

Classic 200 Tap

- Suitable for high or low pressures systems
- Fitted with flow aerator
- Flexi-tails included
- Chrome or Brushed Steel



ESSCLAS300/BS

Classic 300 Tap

- Suitable for high or low pressures systems
- Fitted with flow aerator
- Flexi-tails included
- Chrome or Brushed Steel



ESSCLAS400/BS

Classic 400 Tap

- Suitable for high or low pressures systems
- Fitted with flow aerator
- Flexi-tails included
- Chrome or Brushed Steel



ESSCLAS500/BS

Classic 500 Tap

- Suitable for high or low pressures systems
- Fitted with flow aerator
- Flexi-tails included
- Chrome or Brushed Steel



ESSDES50/BS

Designer 50 Tap

- Suitable for high or low pressures systems
- Fitted with flow aerator
- Flexi-tails included
- Chrome or Brushed Steel



ESSDES100/BS

Designer 100 Tap

- Suitable for high or low pressures systems
- Fitted with flow aerator
- Flexi-tails included
- Chrome or Brushed Steel



ESSDES150/BS

Designer 150 Tap

- Suitable for high or low pressures systems
- Fitted with flow aerator
- Flexi-tails included
- Chrome or Brushed Steel



ESSDES200/BS

Designer 200 Tap

- Suitable for high or low pressures systems
- Fitted with flow aerator
- Flexi-tails included
- Chrome or Brushed Steel



ESSDES300/BS

Designer 300 Tap

- Suitable for high or low pressures systems
- Flexi-tails included
- Chrome or Brushed Steel



ESSTRA100/BS

Traditional 100 Tap

- Suitable for high or low pressures systems
- Fitted with flow aerator
- Flexi-tails included
- Chrome or Brushed Steel with White levers



ESSTRA200/BS

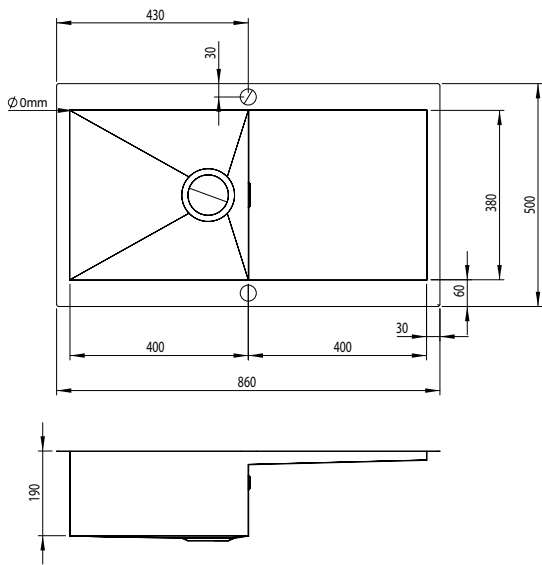
Traditional 200 Tap

- Suitable for high or low pressures systems
- Fitted with flow aerator
- Flexi-tails included
- Ceramic discs on levers
- Chrome or Brushed Steel

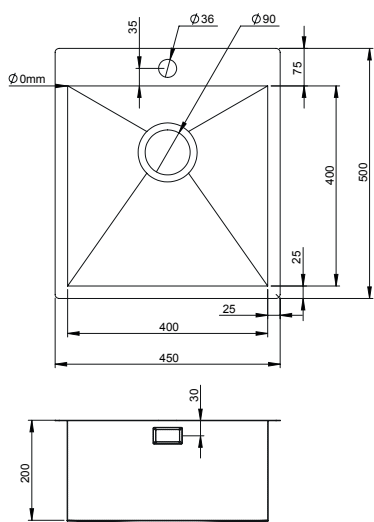


sink dimensions

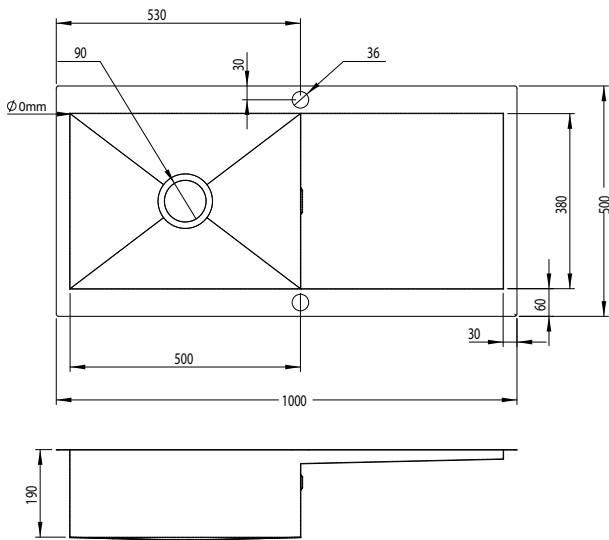
EQUAD861



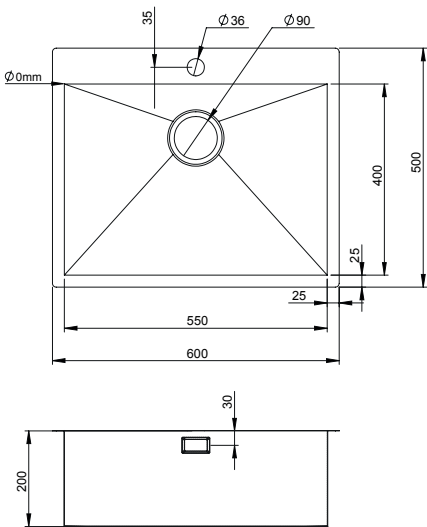
EQUAD451



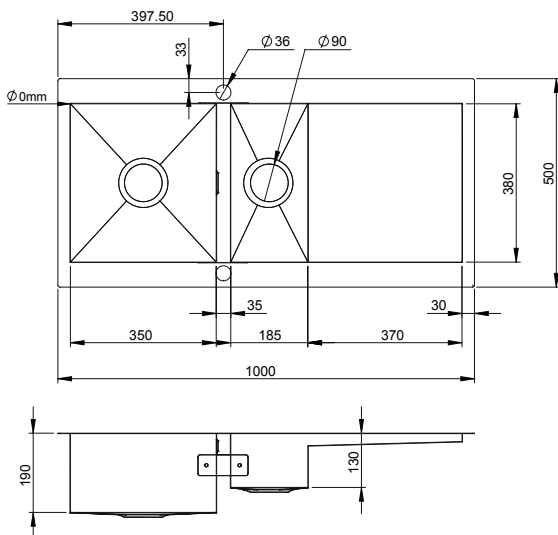
EQUAD101



EQUAD601

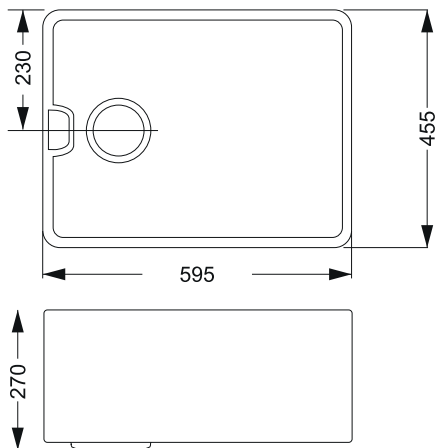


EQUAD102

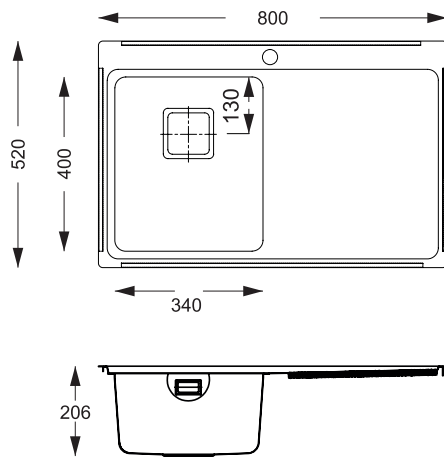


ESSBELSS

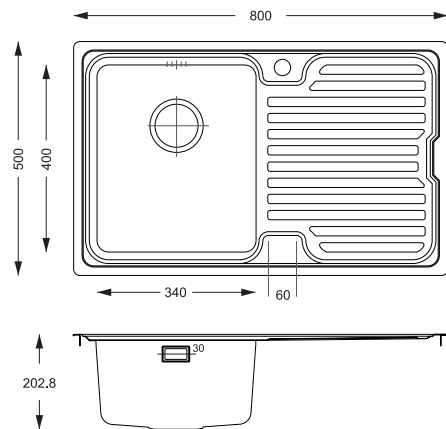
CB-TRAD



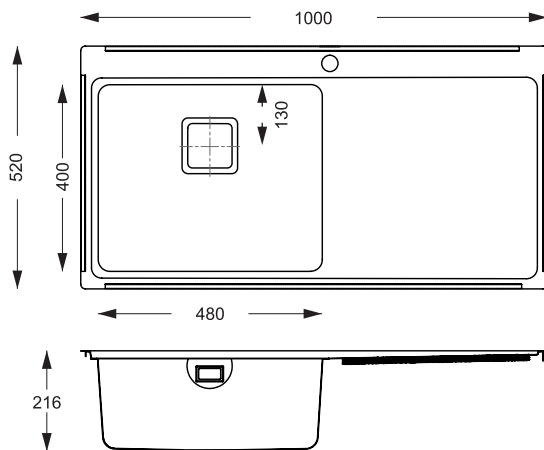
EMIN8001



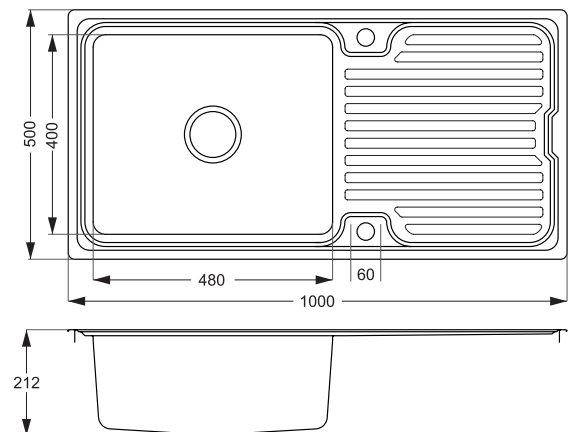
ESSDES8001



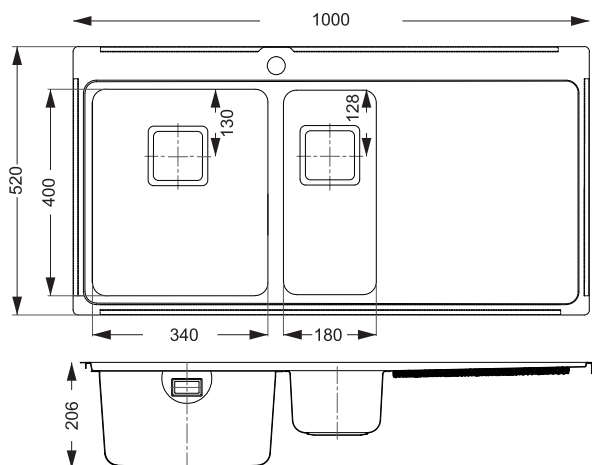
EMIN1001



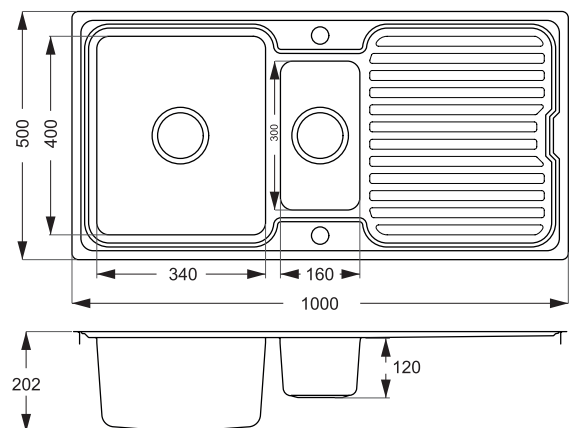
ESSDES10001



EMIN1002

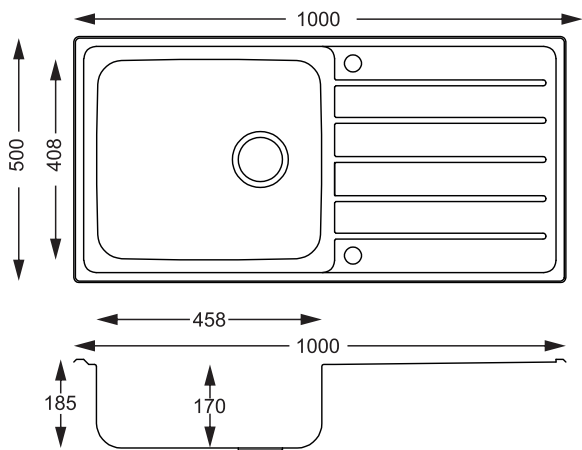


ESSDES10002

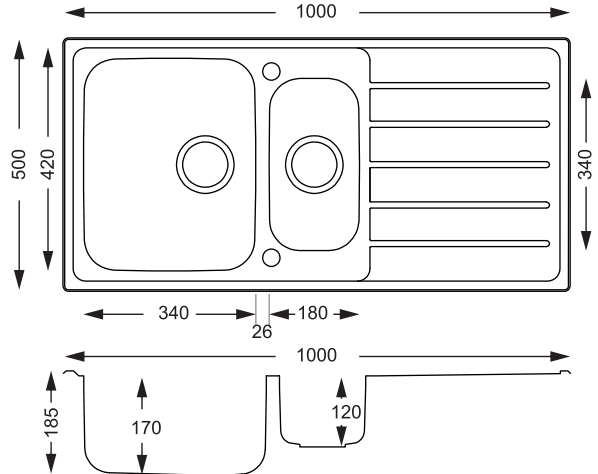


sink dimensions

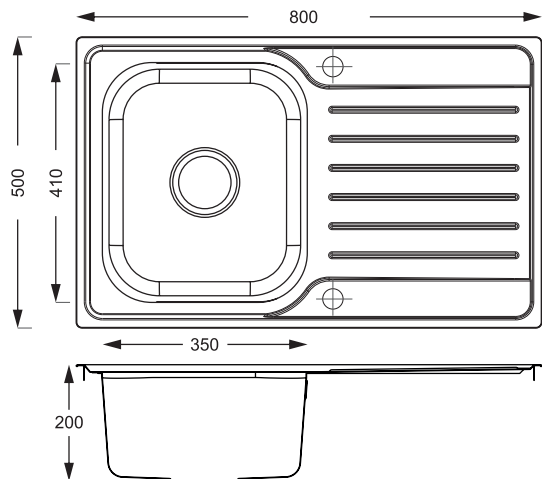
ESS101



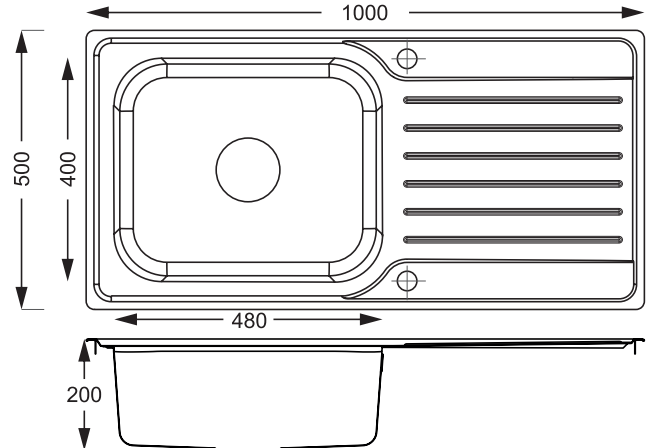
ESS102



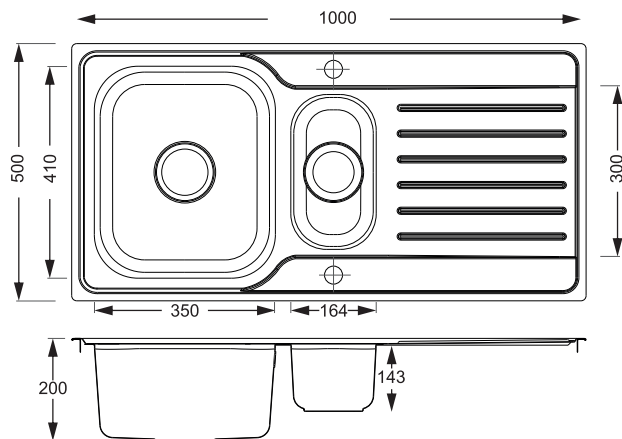
ESSDB801



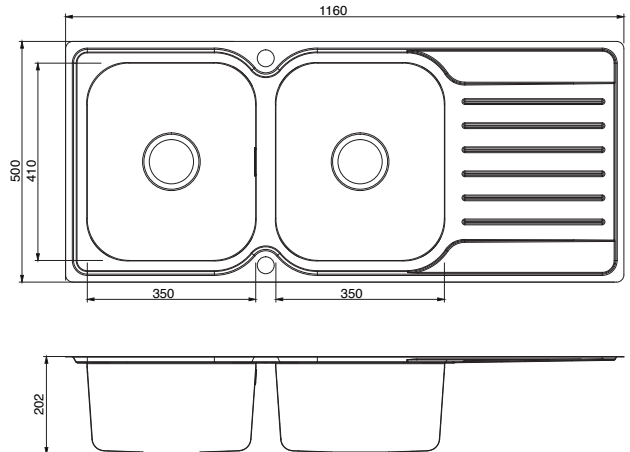
ESSDB101



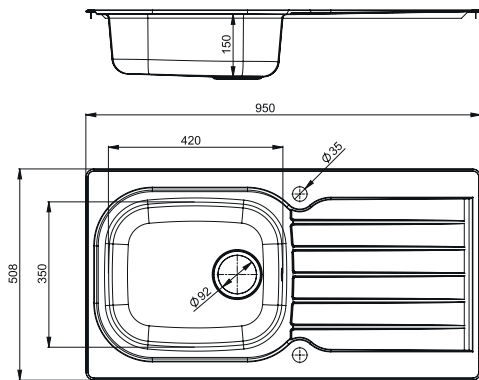
ESSDB102



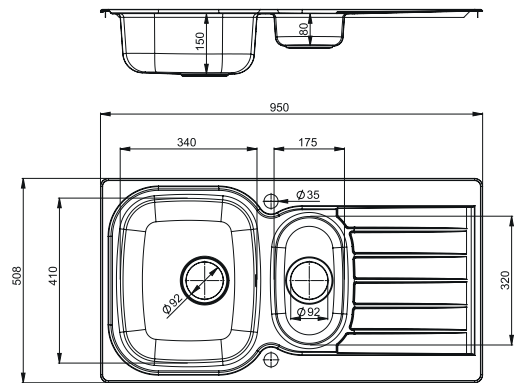
ESSDBD



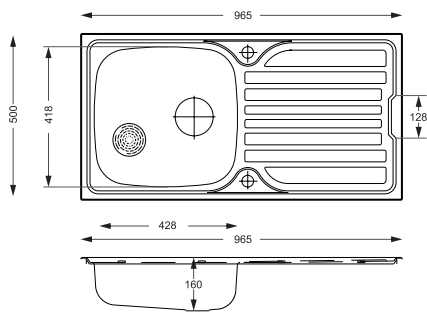
ESS201



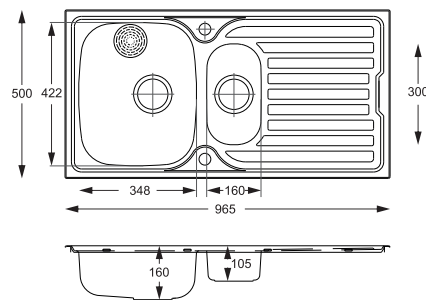
ESS202



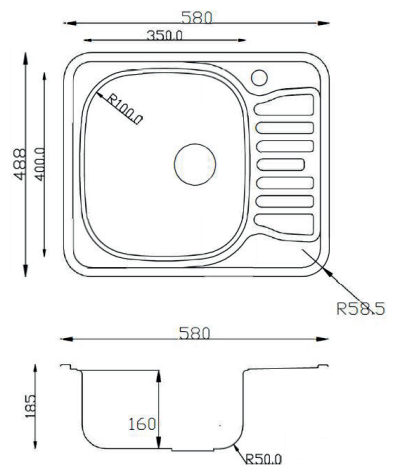
ESS9651



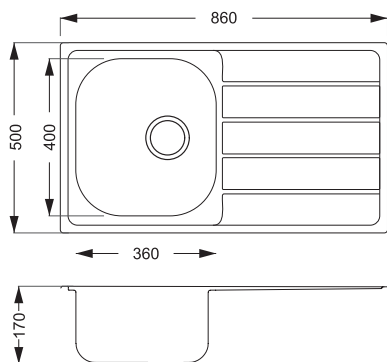
ESS9652



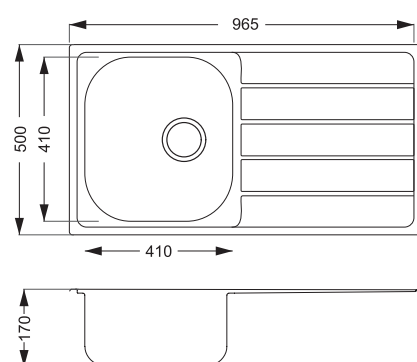
ESS5801



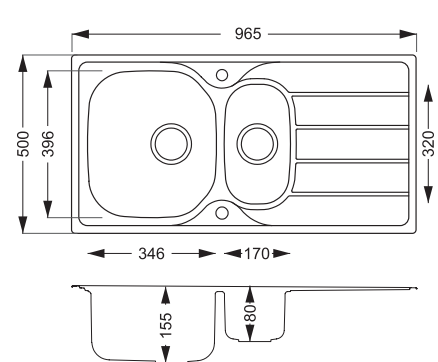
ESS100



ESS100L

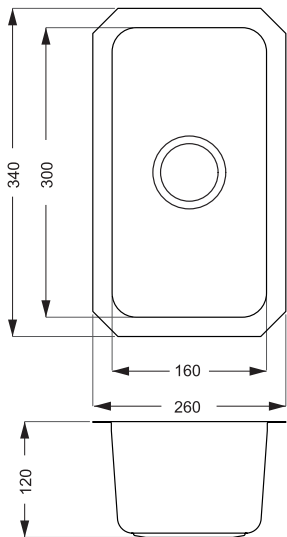


ESS150

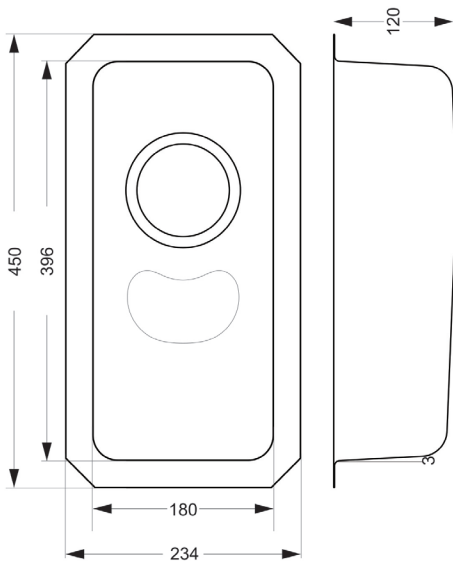


sink dimensions

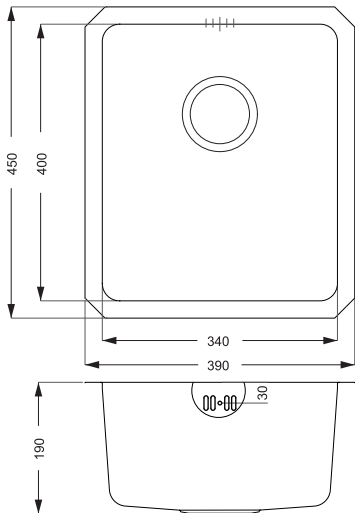
E25UM1601



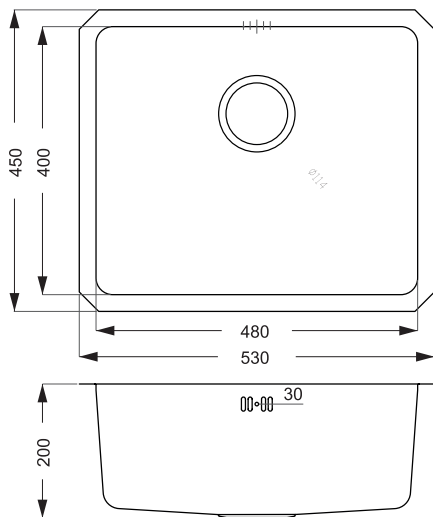
E25UM1801



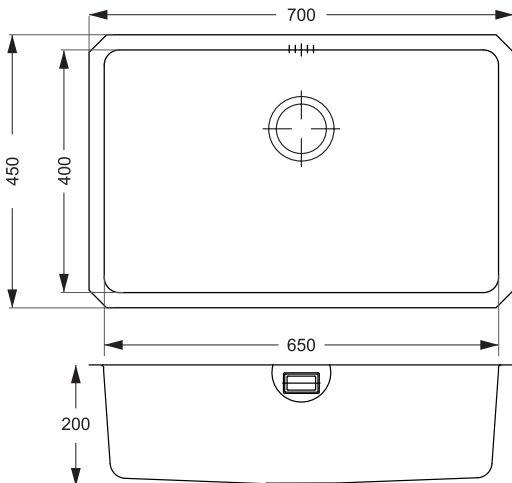
E25UM3401



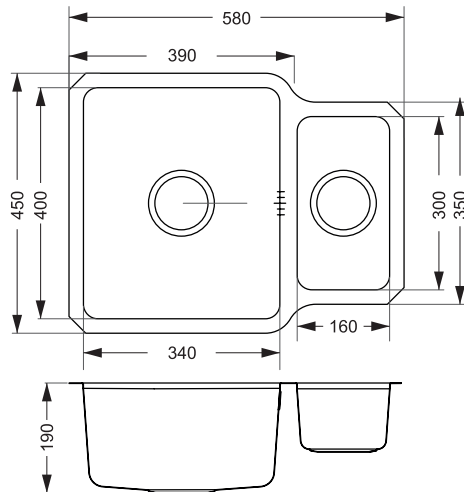
E25UM4801



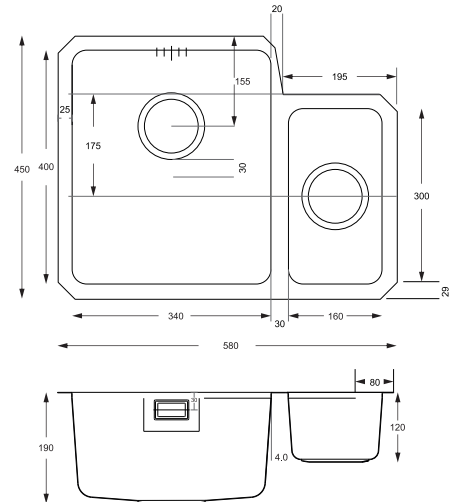
E25UM6501



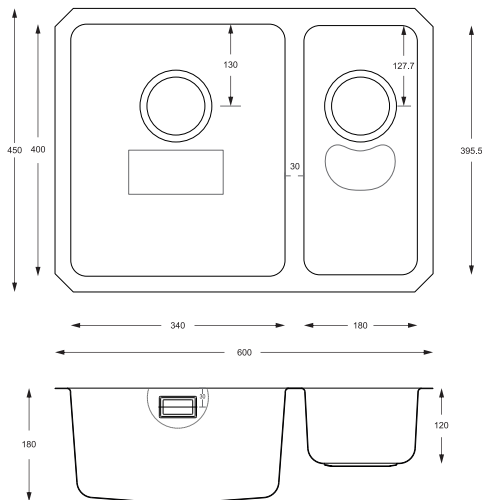
E25UM2REV



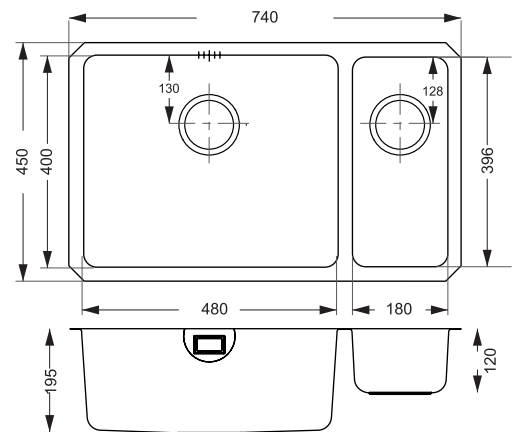
E25UM2L/R



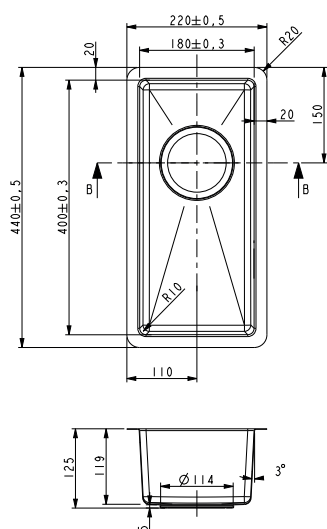
E25UM5502L/R



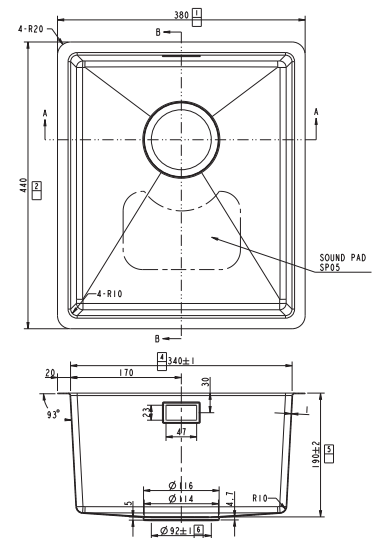
E25UM6902L



E10UM1801

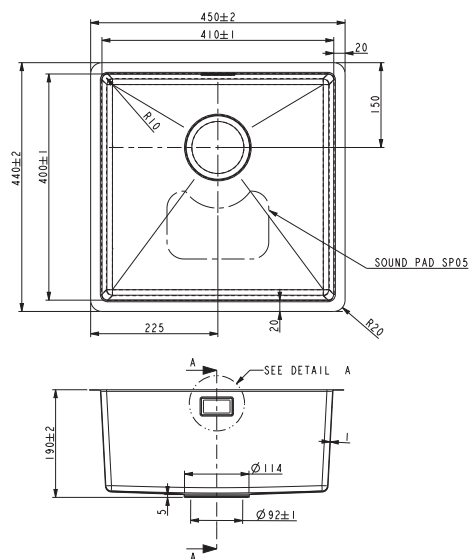


E10UM3401

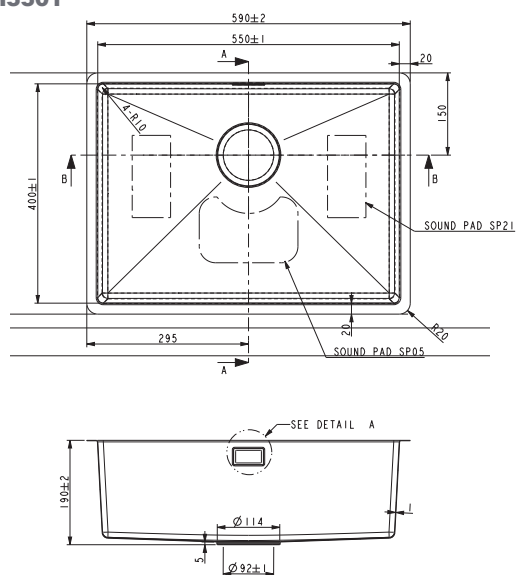


sink dimensions

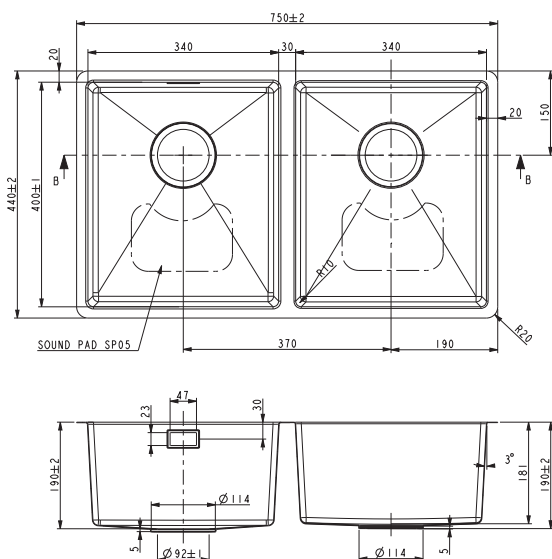
E10UM4101



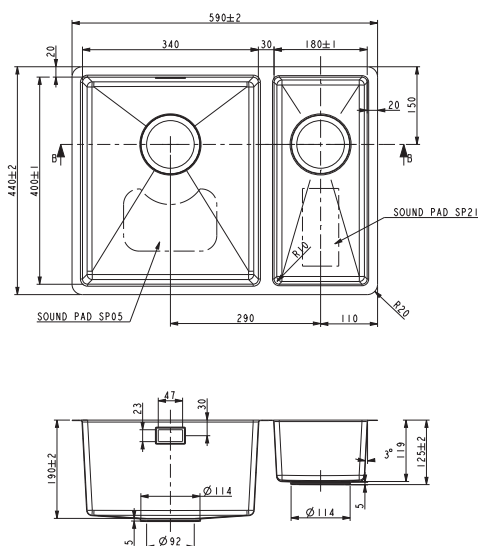
E10UM5501



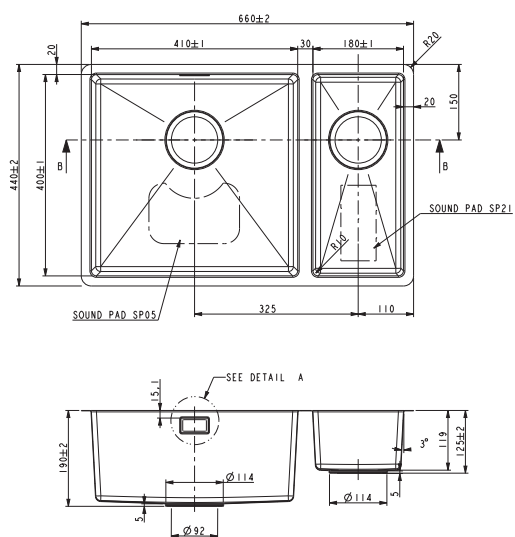
E10UM3434



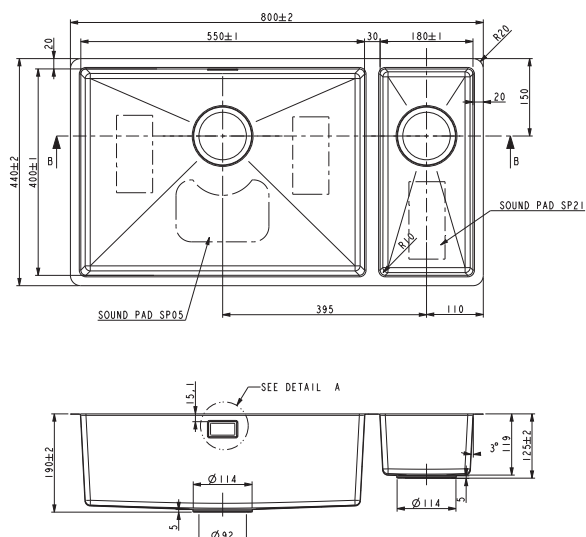
E10UM3418L/R



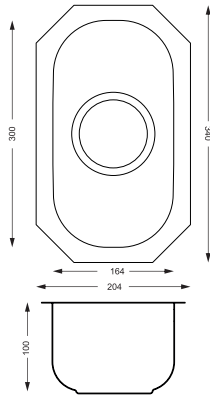
E10UM4118L/R



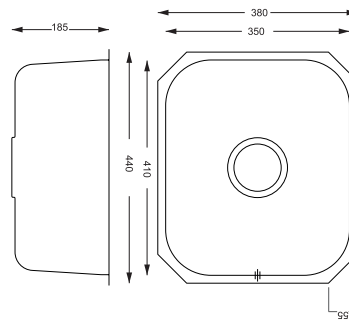
E10UM5518L/R



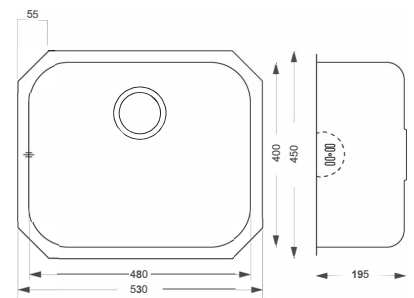
ESSUM1601



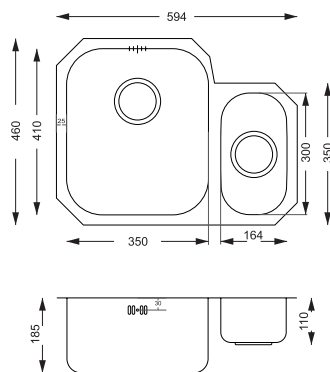
ESSUM3501



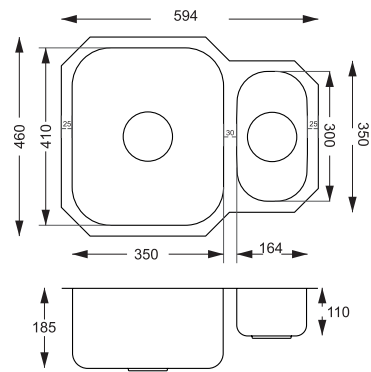
ESSUM4801



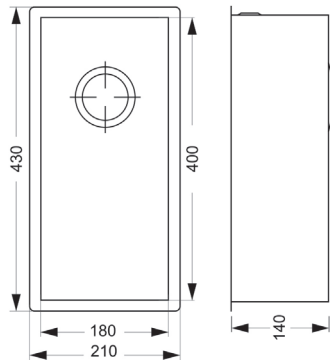
ESSUM2L/R



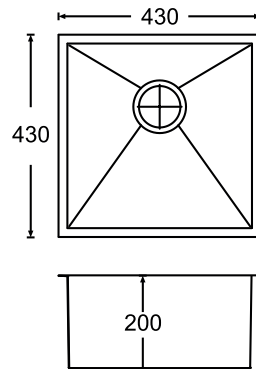
ESSUM2REV



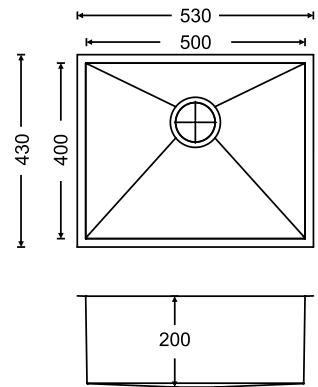
ESQUM1801



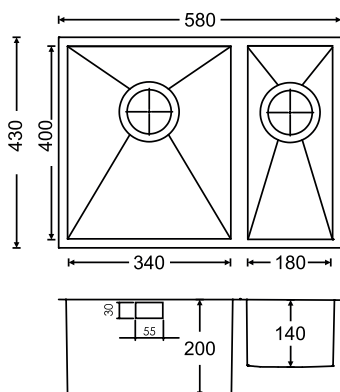
ESQUM4001



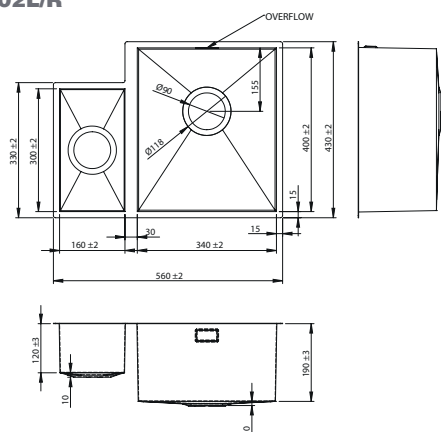
ESQUM5001



ESQUM5502

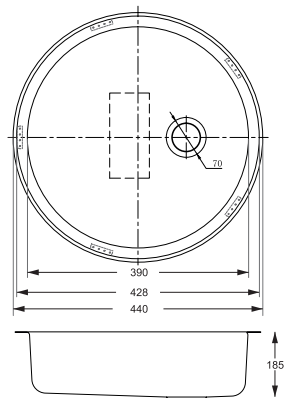


ESQUM1502L/R

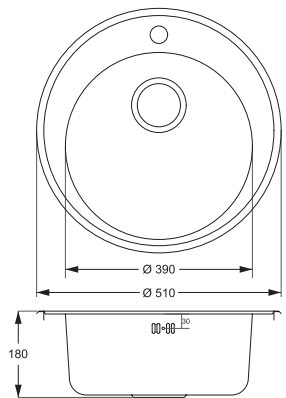


sink dimensions

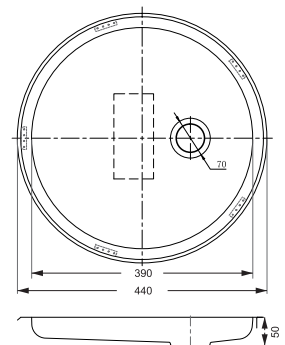
ESSRDUM430



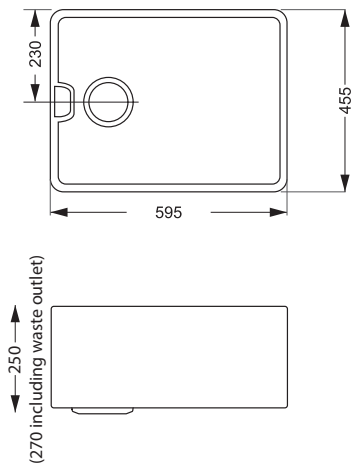
ESSRD440



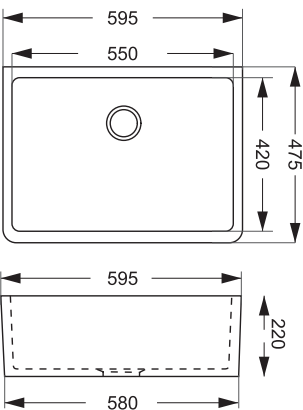
ESSRDRAINER



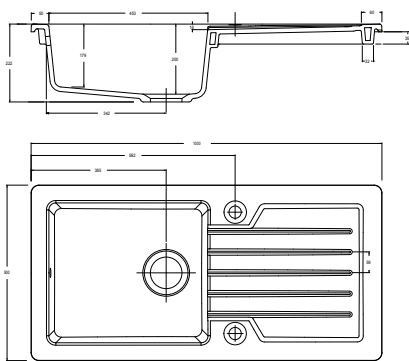
ECERFARBMBEL



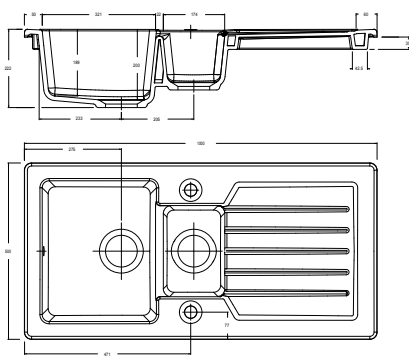
ECERBEL



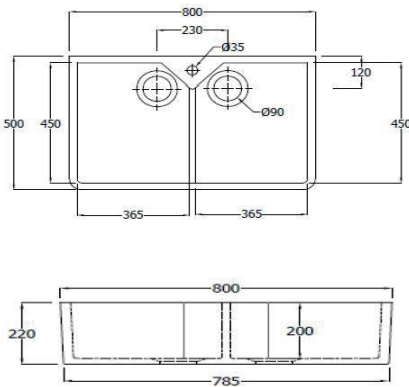
ECER100



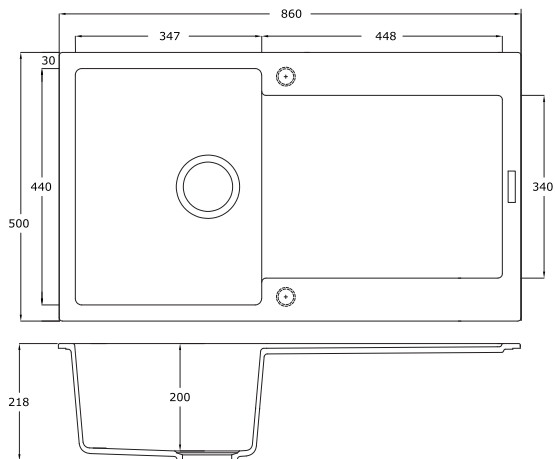
ECER150



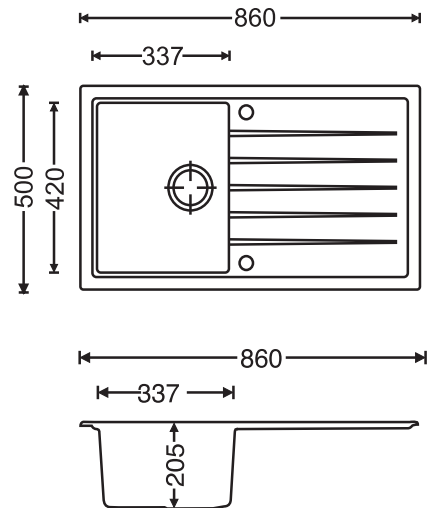
ECER800D



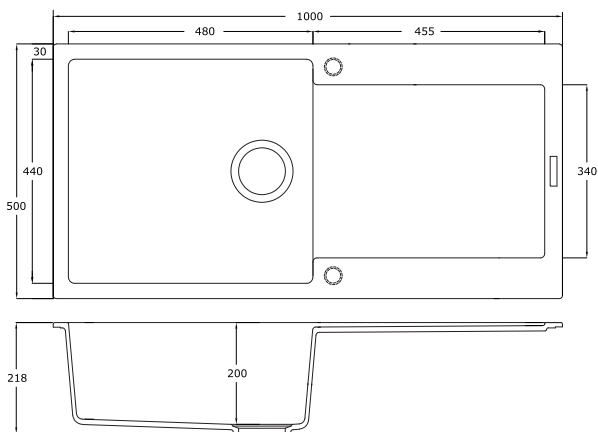
EDG8601



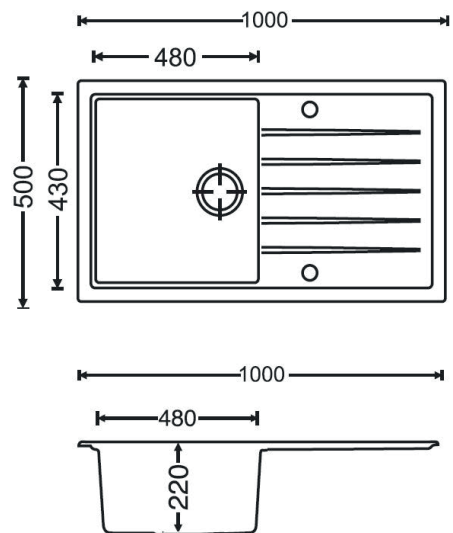
ELIN8601



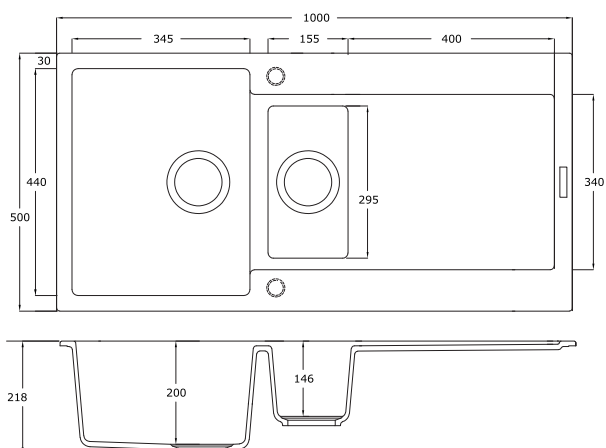
EDG1001



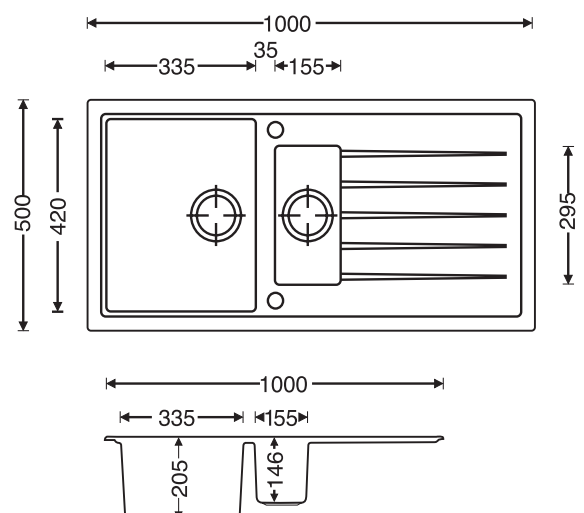
ELIN10001



EDG1002

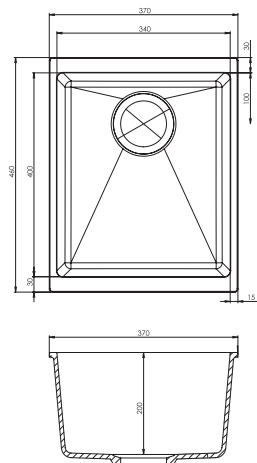


ELIN10002

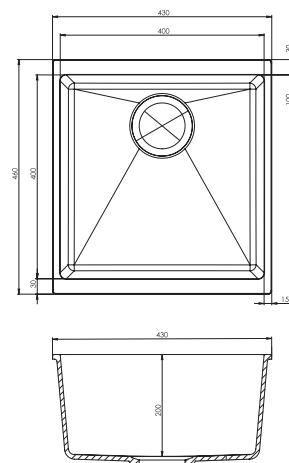


sink dimensions

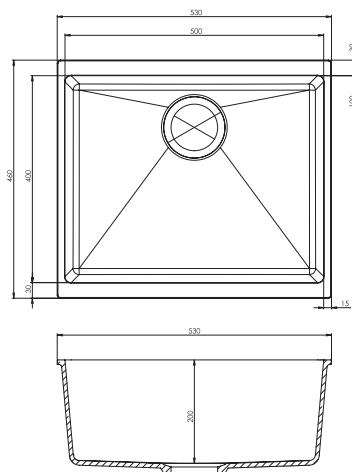
ECUB340



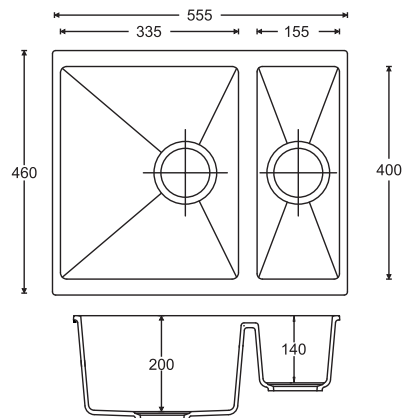
ECUB400



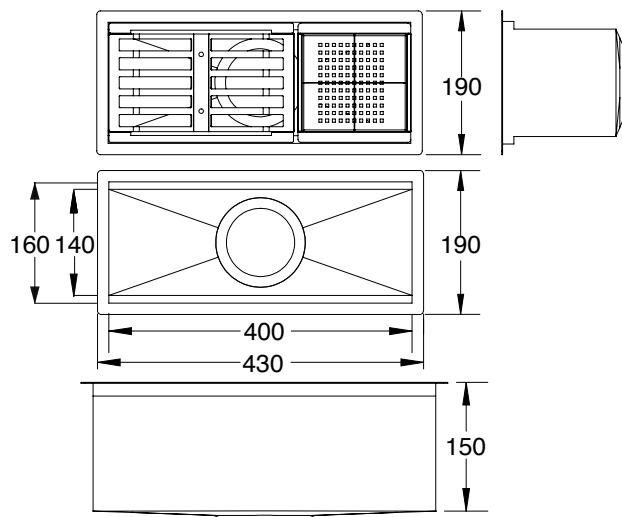
ECUB500



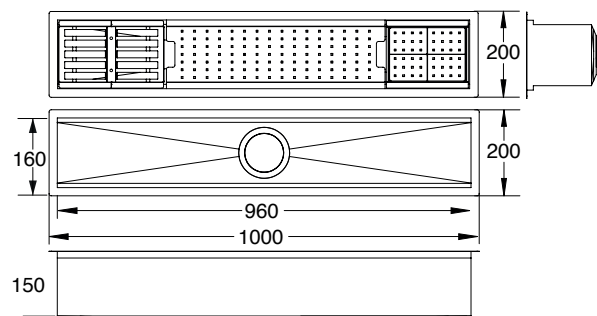
ECUB150



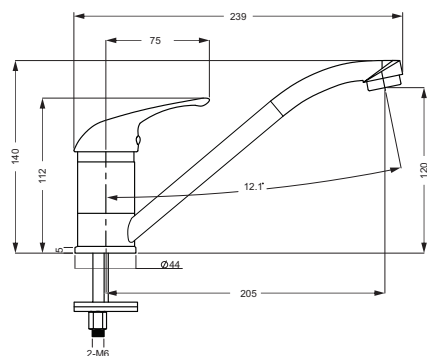
EDRAINER



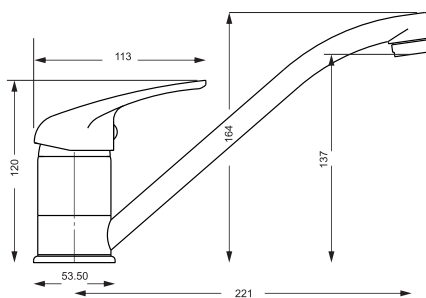
EDRAINERL



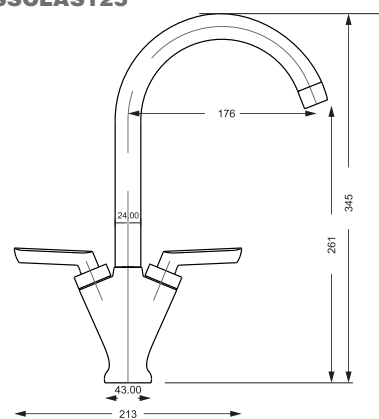
ESSCLAS75



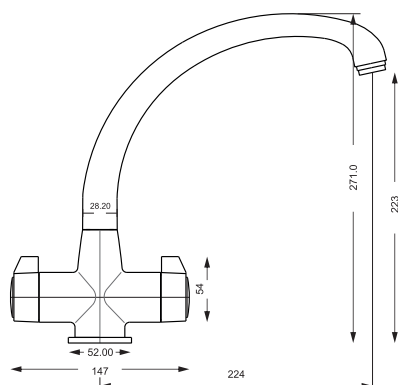
ESSCLAS100



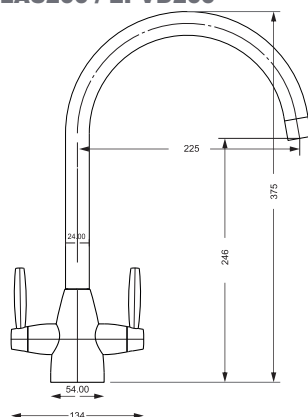
ESSCLAS125



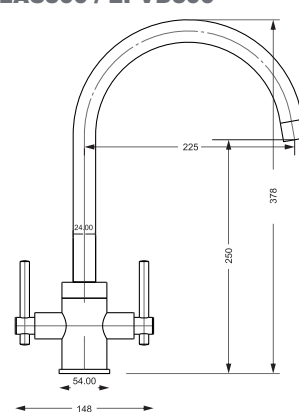
ESSCLAS150



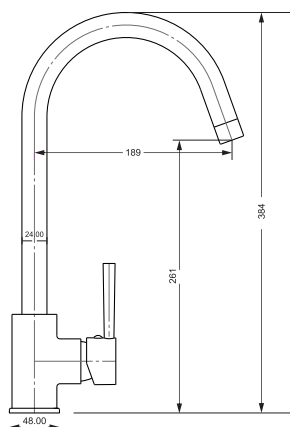
ESSCLAS200 / EPVD200



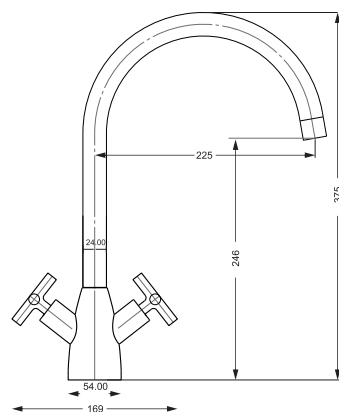
ESSCLAS300 / EPVD300



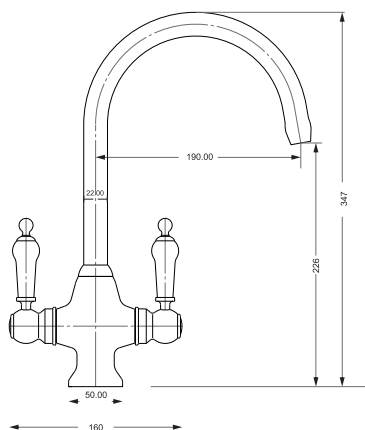
ESSCLAS400 / EPVD400



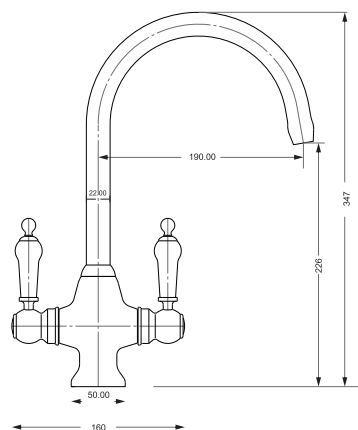
ESSCLAS500



ESSTRA100

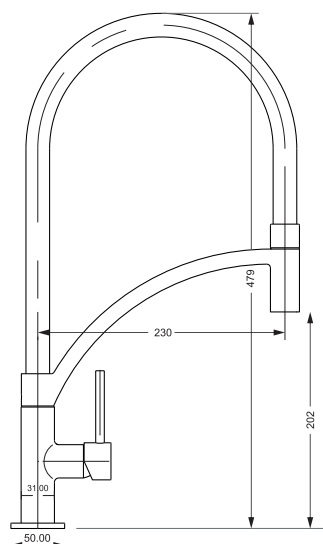


ESSTRA200

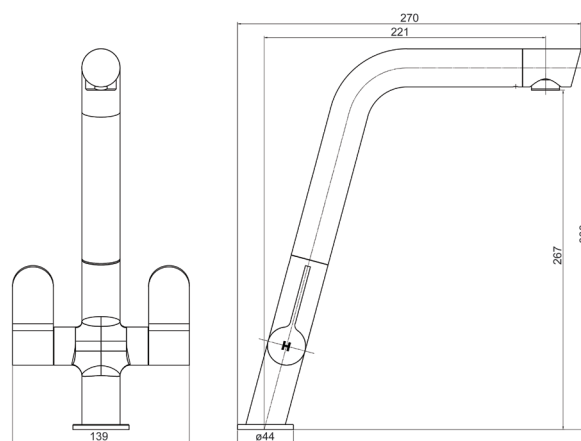


tap dimensions

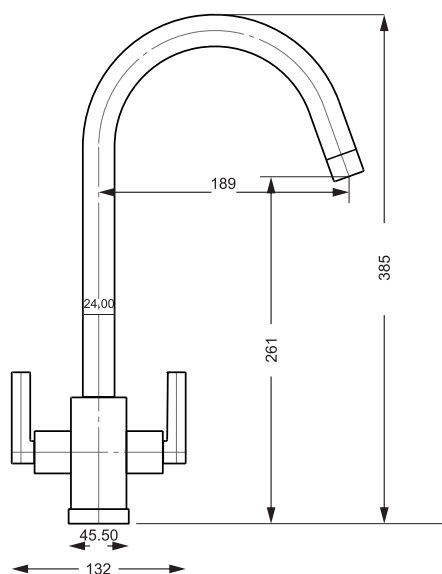
ESSPOCH



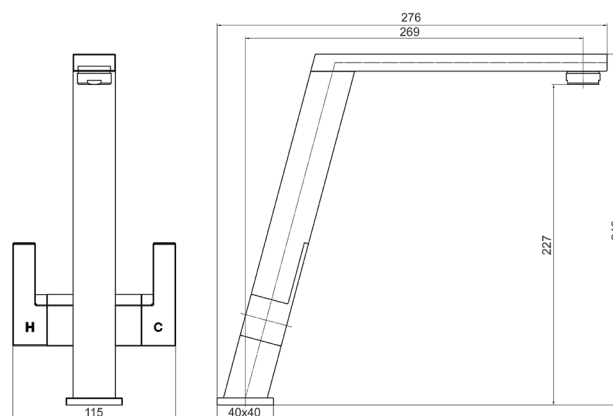
ESSDES50



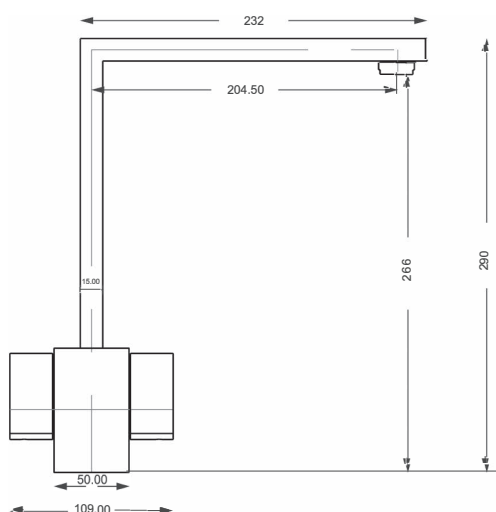
ESSDES100



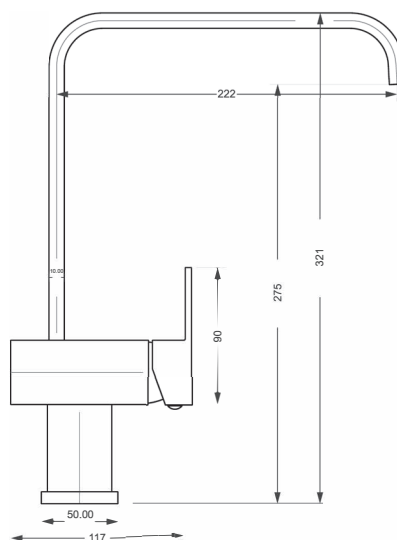
ESSDES150



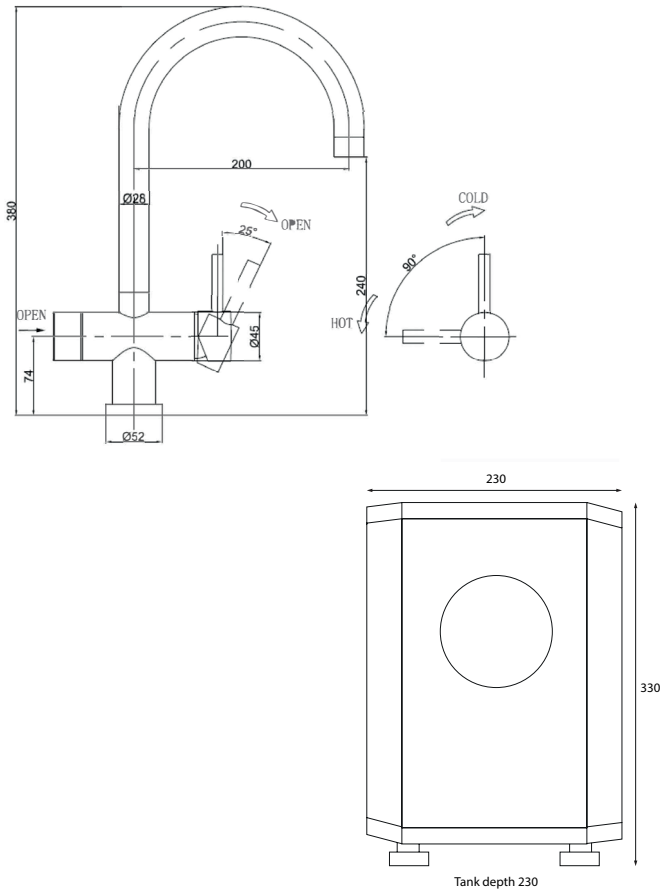
ESSDES200



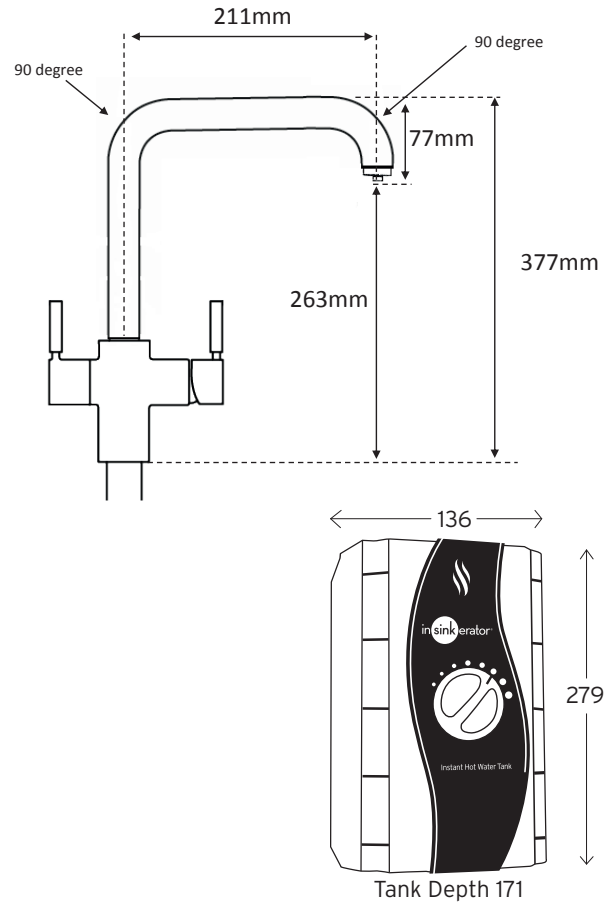
ESSDES300



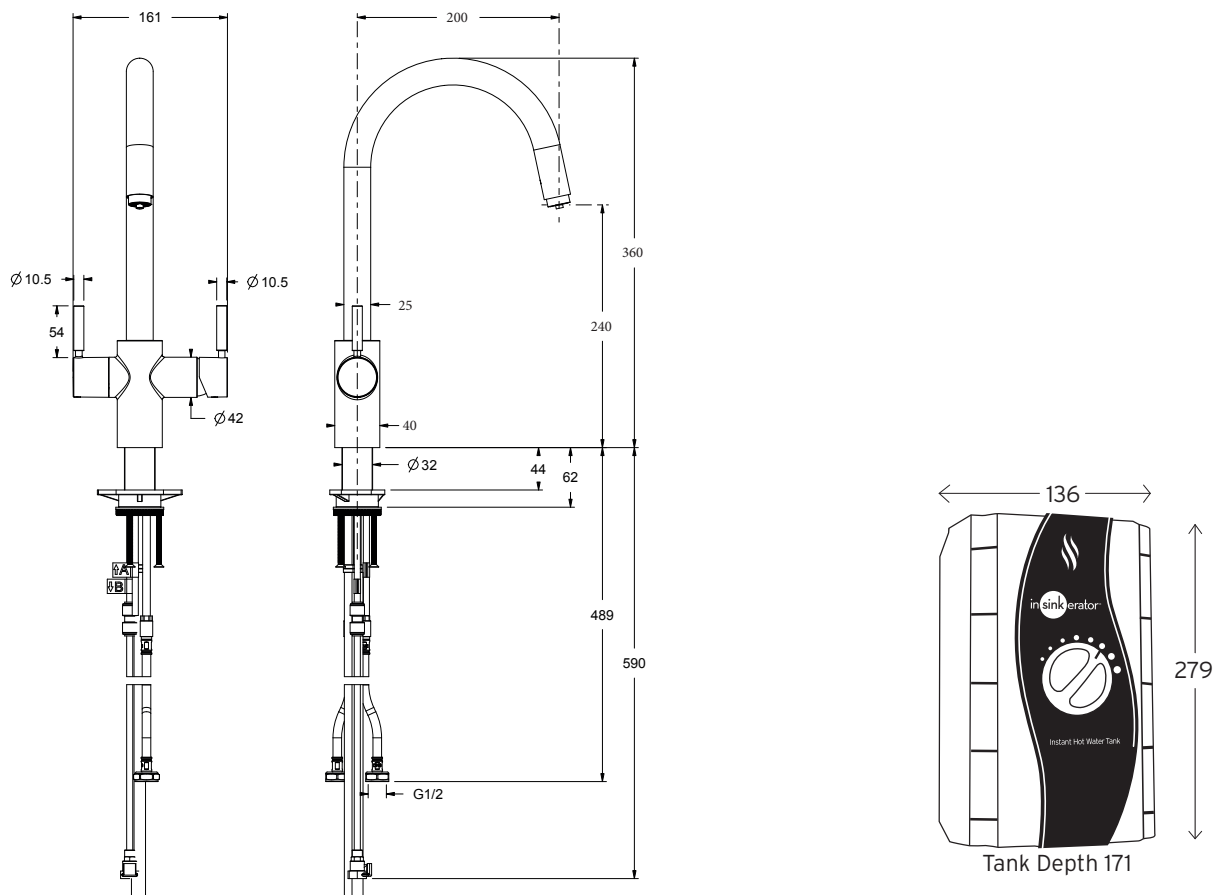
E3N1ELECH/BS



ESSLAVA



ESSVULCANO



essentials

sinks & taps

October 2022

For any service queries or to report a product fault please telephone: 01260 223 163.
Service number for the Lava or Vulcano 3 in 1 hot taps please telephone: 01279 641 887.



**All products are
CE approved**

Our policy is one of constant development and improvement. Whilst this is accurate at the time of printing, you are advised to check these specifications with the product. It is intended to help with your purchasing decision. It is not intended to replace the installation manual which provides more detailed information and should be disregarded if specification and/or appearances are changed in the interest of continuous improvement. E&OE. October 2022.



THE CROWN IMPERIAL GROUP
WATERLINE 03330 149 149 www.waterline.co.uk

